

**New Title IV
Program Integrity Rules**


**Satisfactory Academic Progress
and Retaking Coursework**


Financial Aid and Scholarships



New Rules

- Ability to Benefit
- Credit Hour
- Disbursements
- Gainful Employment
- High School Diploma
- Incentive Compensation
- Misrepresentations
- **Retaking Coursework**
- Return to Title IV
- **Satisfactory Academic Progress**
- State Authorization
- Verification
- Written Arrangements

 **START HERE
GO FURTHER**
FEDERAL STUDENT AID®



Offices Affected by New Rules

- Academic Advisors
- Curriculum Services
- Financial Aid and Scholarships
- Human Resources
- Institutional Research
- Registrar's Office
- Student Business Services
- Undergraduate Admissions
- And Other Offices





Presentation Overview

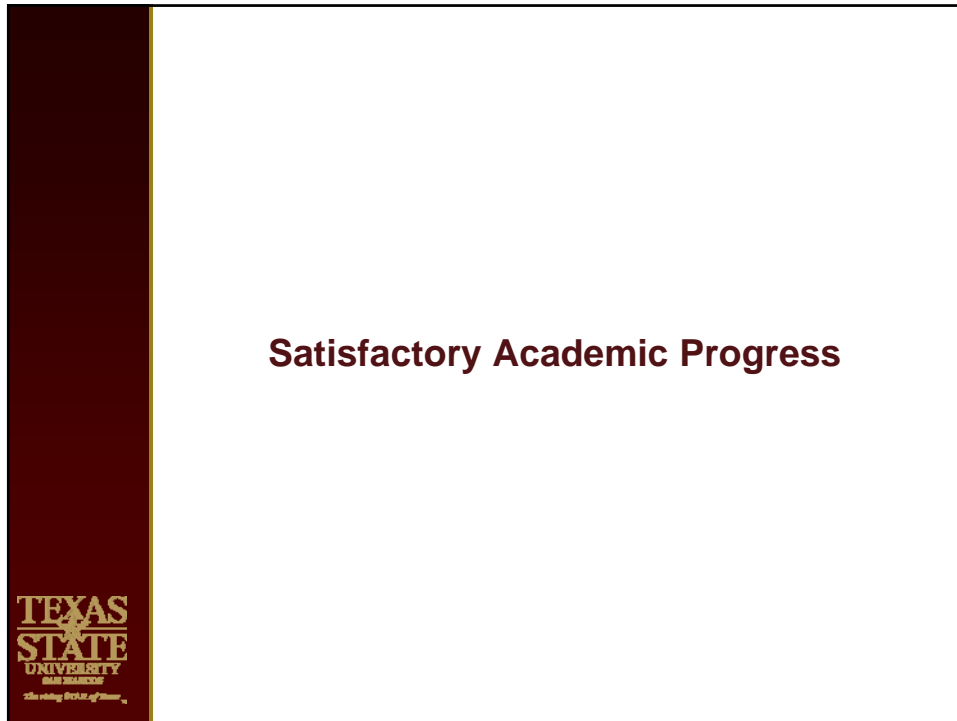
Satisfactory Academic Progress

- Change in GPA
- Change in Completion Rate
- Change in Maximum Hours
- Financial Aid Suspension
- Appeal Process

Retaking Coursework

- Retaking Coursework Rules
- Examples of Retaking Coursework





Maintain My Eligibility

Revised Rules - Effective July 1, 2011

In order to receive financial aid, you must meet the Satisfactory Academic Progress (SAP) requirements. SAP denotes a student's successful completion of coursework that is applied to an eligible certificate or degree-seeking program. Regulations require that all students who receive the benefit of Federal Title IV assistance must maintain SAP. Texas State applies the SAP standards to all federal, state and institutional financial assistance programs. The only exceptions are for the TEXAS Grant and B-On-Time, which have separate Satisfactory Academic Progress requirements as defined by applicable law. To view the program-specific SAP requirements (for example, TEXAS Grant SAP, B-On-Time Loan SAP), click the appropriate link on the vertical (left) menu bar.

Evaluation Point

- Minimum GPA
- Minimum Completion Rate
- Maximum Hour Limit

SAP Terms: [Financial Aid Suspension](#) | [Reinstatement](#) | [Appeal Process](#) | [Appeal Deadlines](#)

Top

Minimum GPA

At the end of each evaluation period (end of spring semester), you must have achieved at least a minimum cumulative Texas State GPA in order to remain eligible for financial aid. The GPA requirements are indicated in the below table

Minimum Cumulative Texas State GPA Requirements	
Degree or Certificate	Minimum Cumulative Texas State GPA
1 st Bachelor's	2.0

Change in GPA

Minimum Cumulative Texas State GPA Requirements		
Degree or Certificate	Old Minimum GPA	New Minimum GPA
1 st Bachelor's	1.85 / 2.0	2.0
2 nd Bachelor's	2.5	2.5
Certificate	2.5	3.0
Master's	3.0	3.0
Doctoral	3.0	3.0

Change in Completion Rate

- The completion rate (completed hours divided by attempted hours) is still 70%.
- Completion rate is no longer based on previous summer, fall and spring semesters.
- Instead, completion rate is now based on the completion rate during a student's degree program (including transfer hours).



**TEXAS
STATE
UNIVERSITY**
SAN MARCOS
The rising RIVER of Texas

Attempted and Completed Hours

Attempted and Completed Hours for Satisfactory Academic Progress		
Degree or Certificate	Attempted & Completed Hours	Attempted and Not Completed Hours
1 st Bachelor's	A, B, C, D, CR, *RP	W, I, F, PR, *RP
2 nd Bachelor's	A, B, C, D, CR, *RP	W, I, F, PR, *RP
Certificate	A, B, C, D, CR, *RP	W, I, F, PR, *RP
Master's	A, B, C, CR, PR, *RP	W, I, D, F, *RP
Doctoral	A, B, CR, PR, *RP	W, I, C, D, F, *RP

*Only repeats included in the GPA are considered attempted and completed.

**TEXAS
STATE
UNIVERSITY**
SAN MARCOS
The rising RIVER of Texas

Change in Maximum Hours

Maximum Hours Limit Requirements		
Degree or Certificate	<i>Old</i> Maximum Hours	<i>New</i> Maximum Hours
1 st Bachelor's	192	180
2 nd Bachelor's	45	45
Certificate	90	31
Master's	104	104
Doctoral	113	113



Financial Aid Suspension


Old Rules

- Financial Aid Probation – Can receive aid for one additional year
- Financial Aid Suspension – Aid eligibility terminated

New Rules

- ~~Financial Aid Probation – Can receive aid for one additional year~~
- Financial Aid Suspension **ONLY** – Aid eligibility terminated





Appeal Process

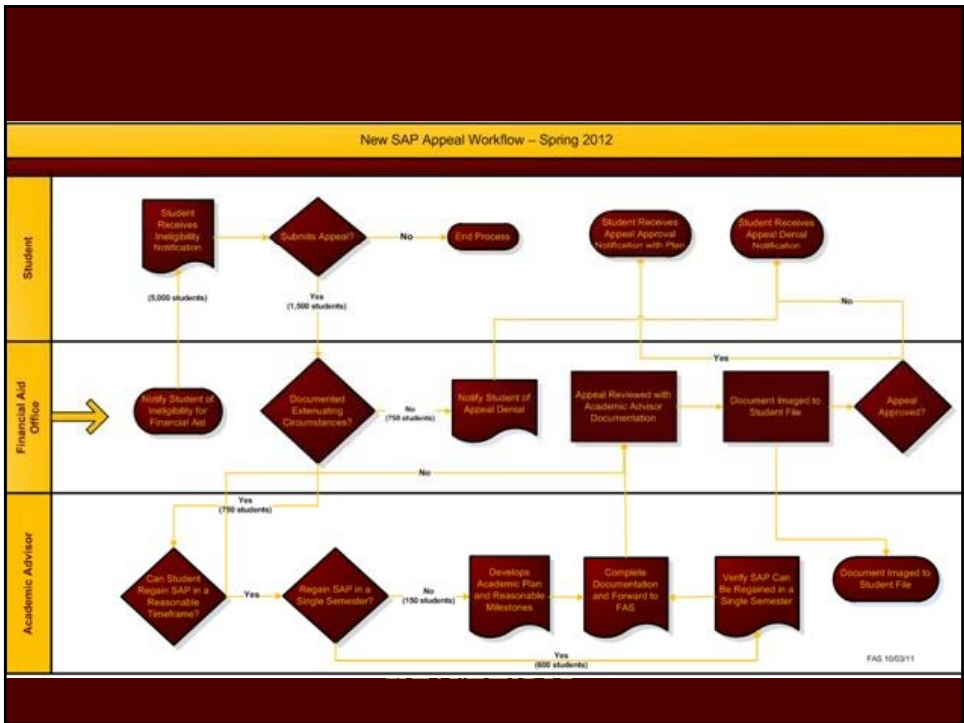
No Change


- A written description that addresses why student failed to meet SAP
- A written description of what has changed in the student's situation to enable the student to demonstrate SAP at the next evaluation point
- Documentation to support any claims

New Process

If student demonstrates an extenuating circumstance that will no longer affect negatively his or her academic performance, an academic advisor must:

1. Verify SAP can be regained in a single semester; or
2. Demonstrate through an academic plan (with measurable milestones) that student can regain SAP within a reasonable timeframe.





TEXAS STATE UNIVERSITY
SAN MARCOS
The rising STAR of Texas

Financial Aid and Scholarships

**Academic Plan Information Request for
Financial Aid Satisfactory Academic Progress Appeal**

Robert Cat
A12345678

Academic Advisor:
Ms. Adi Visor

- The above student has filed an appeal to the Satisfactory Academic Progress (SAP) requirements for financial aid eligibility.
- After reviewing the student's letter and supporting documentation, the student appears to have sufficient documented extenuating circumstances to be considered for an SAP exemption.
- Prior to approving an exemption, the institution must first demonstrate that the student can regain SAP within a reasonable timeframe.
- As the student's academic advisor, please provide the below information to assist with this determination.

For Academic Advisors to Complete (1 – 3)

Evaluating Transcripts – Slide 1

Term Sequence Course History SHATERM 8.4 (PROD)

ID: A00 At Course Level Codes by Person: UG Start Term:

Current Standing Term GPA and Course Detail Information Student-Centric GPA and Course Information

Current Standing

Minimum GPA - 1st Bachelor's Texas State GPA >= 2.0
Texas State GPA = 2.95

Minimum Completion Rate - Total Overall Passed Hours/Total Overall Attempted Hours >= 70%
Completion Rate 64/68 = 94.1%

Maximum Hours Limit = 1st Bachelor's Total Overall Attempted Hours <= 180
Total Overall Attempted Hours = 68

SAP Requirements Met

	Attempted Hours	Passed Hours	Earned Hours	GPA Hours	Quality Points	GPA
Institution:	47.000	43.000	43.000	43.000	127.00	2.95
Transfer:	21.000	21.000	21.000	18.000	48.00	2.67
Overall:	68.000	64.000	64.000	61.000	175.00	2.87

Evaluating Transcripts – Slide 2

Term Sequence Course History SHATERM 8.4 (PROD)

ID: A0C Ac Course Level Codes by Person: UG Start Term:

Current Standing Term GPA and Course Detail Information Student-Centric GPA and Course Information

Current Standing

Minimum GPA - 2nd Bachelor's Texas State GPA >= 2.5
Texas State GPA = 2.28 - **Failed**

First Term Attended: 200910
Last Term Attended: 201210
Academic Standing: GS Good Standing
Academic Standing Override:
Progress Evaluation:
Progress Evaluation Override:
Combined Academic Standing Override:
Combined Academic Standing:

Minimum Completion Rate - Total Overall Passed Hours/Total Overall Attempted Hours >= 70%
Completion Rate 75/94 = 79.7%

Maximum Hours Limit = 2nd Bachelor's Total Overall Attempted Hours <= 45
Total Overall Attempted Hours = 94 - **Failed**

Student Failed SAP on GPA and Maximum Hours

	Attempted Hours	Passed Hours	Earned Hours	GPA Hours	Quality Points	GPA
Institution:	94.000	75.000	75.000	75.000	171.00	2.28
Transfer:	.000	.000	.000	.000	.00	.00
Overall:	94.000	75.000	75.000	75.000	171.00	2.28

Retaking Coursework

Retaking Coursework

- Retaking of previously-passed coursework in a program is limited to one such repetition of a course for purposes of determining a student's enrollment status for Title IV funding.
- For courses where all students are expected to enroll in a class on a continuing basis, and the recurring use of the same course number—but not the same course content—would not be considered to be retaking coursework.
- Course numbering is not determinative—as that numbering is established for the administrative convenience of the institution.



Retaking Coursework Examples


Example 1

Term	Course	Result	Full-Time Eligibility Status
Fall 2010	English 101	Fail	Eligible
Spring 2011	English 101	Pass	Eligible
Summer 2011	English 101	Pass (1st repeat of previously passed course)	Eligible
Fall 2011 (future)	English 101	2nd repeat of previously passed course.	Not Eligible to count toward Full-time enrollment status.


Example 2

Term	Course	Result	Full-Time Eligibility Status
Fall 2010	History 101	Fail	Eligible
Spring 2011	History 101	Pass	Eligible
Summer 2011	History 101	Fail (1st repeat of previously passed course)	Eligible
Fall 2011 (future)	History 101	2nd repeat of previously passed course.	Not Eligible to count toward Full-time enrollment status.





Questions



Presenter Contact Information

Christopher D. Murr, Ph.D.
Director
Financial Aid and Scholarships
Texas State University-San Marcos
512.245.3975
cm18@txstate.edu

Dede Gonzales
Associate Director
Financial Aid and Scholarships
Texas State University-San Marcos
512.245.7468
dg10@txstate.edu

Presentation available at: www.finaid.txstate.edu/forms/newsap.pdf